



Snow Removal Policy

Jason Lawson, Director of Public Works

Operations Summary:

The goal of the Town's Snow Removal Operations is to ensure that all Town-owned facilities, primary public streets, and residential subdivision streets are safe and accessible during the winter season. Primary public streets are defined as those streets/roads that are provided to traffic coming through the Town. Additional caution is advised when using town streets and facilities during the winter season because of the potential for rapidly developing hazardous conditions caused by snow, wind, and freezing temperatures. In an attempt to be proactive whenever possible, the town will pre-treat areas where slick spots might exist on primary thoroughfares. The Town Municipal Complex and Fire Departments will be open and accessible for police and emergency vehicles at all times. All primary public streets will be plowed and passable from edge of pavement to edge of pavement, when possible.

The Department of Public Works has developed the following order in which snow removal will be completed:

1. Salting and removal for primary public street intersections and slick spots on major thoroughfares and entrances to residential subdivisions.
2. Salting and removal for primary public streets.
3. Salting and removal for residential subdivisions and Legacy Core
4. Salting and removal for Town Hall and the Fire Department

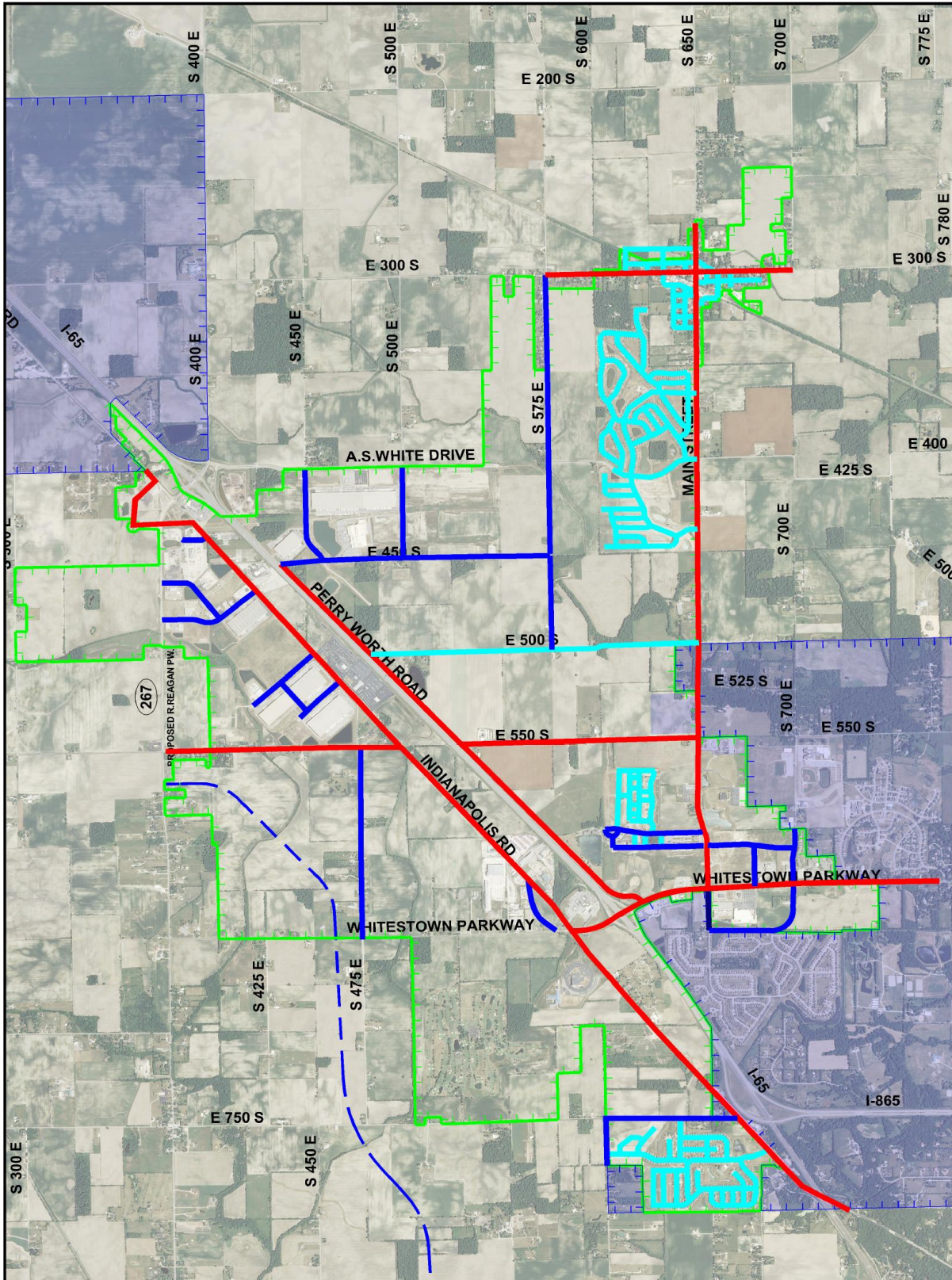
The Town Department of Public Works has developed a procedure to perform snow and ice removal in varying weather conditions. Personnel will respond each time they are notified of weather conditions that include the possibility of creating a hazard for the public. Depending on the severity of the storm, as few as one (1) person and one (1) piece of equipment to as many as ten (10) persons and (10) pieces of equipment will be made available to combat a storm.

Helpful Tips for Snow Removal/Plow Season:

Winter weather will be here before we know it and the Whitestown Department of Public Works would like to provide you with the following helpful tips to ensure a safe and efficient snow removal process.

- Please remember to remove vehicles from the street, so the plows can get as much of the snow off the streets as possible.
- It would help both you and the Town if you wait until the street is plowed before you clear your driveway. This avoids having the snow plowed back into the space you just cleared.
- When you clear your drive, please do not pile the snow in the street. This may create an unsafe situation and the Town may have to return and push that same snow back into your driveway.
- Occasionally we may get an excessive amount of snow that requires the town to plow the streets more than once during the same snow event. Keep this in mind when you clear your drive before it stops snowing.
- We are here to help. If you need assistance during a snow event, please call the Director of Public Works, Jason Lawson, at (317)732-4330. If it is an emergency before or after hours, please call (866)886-6777.

Have a safe Winter Season!



SNOW PLOW PRIORITY PLAN

LEGEND

- WHITESTOWN CORPORATE LIMIT
- LEBANON OR ZIONSVILLE CORPORATE LIMIT
- PLOWING PRIORITY #1
- PLOWING PRIORITY #2
- PLOWING PRIORITY #3



0 2500' 5000'



SCALE: 1" = 2500'



FIG. 1