



November 1, 2022

Town of Whitestown
Attn: Danny Powers
6210 Veterans Drive, Room 600
Whitestown, IN 46075

Re: ADA Curb Ramp Construction Project
Bid Certification and Award Recommendation

Dear Mr. Powers:

We have reviewed and certified the bids for the referenced project. Please see the attached documents. The apparent low, responsive, responsible bidder for the project is DC Construction Services, Inc. Their bid amount for the ADA Curb Ramp Construction Project at various intersections in the Town of Whitestown is \$176,424.29.

Upon legal review, the Town of Whitestown, at their discretion, may award the project accordingly. Once that is complete, documentation including the agreement between the Town of Whitestown and the awarded contractor will need to be executed.

If you have any questions, please contact me.

Sincerely,

Paul Lincks, P.E.

Attachments – Bid Tabulation

Town of Whitestown
Board of Public Works
ADA Curb Ramp Construction Project
Bid Tabulation
Bid Opening: 11/1/2022 at 10:00 am

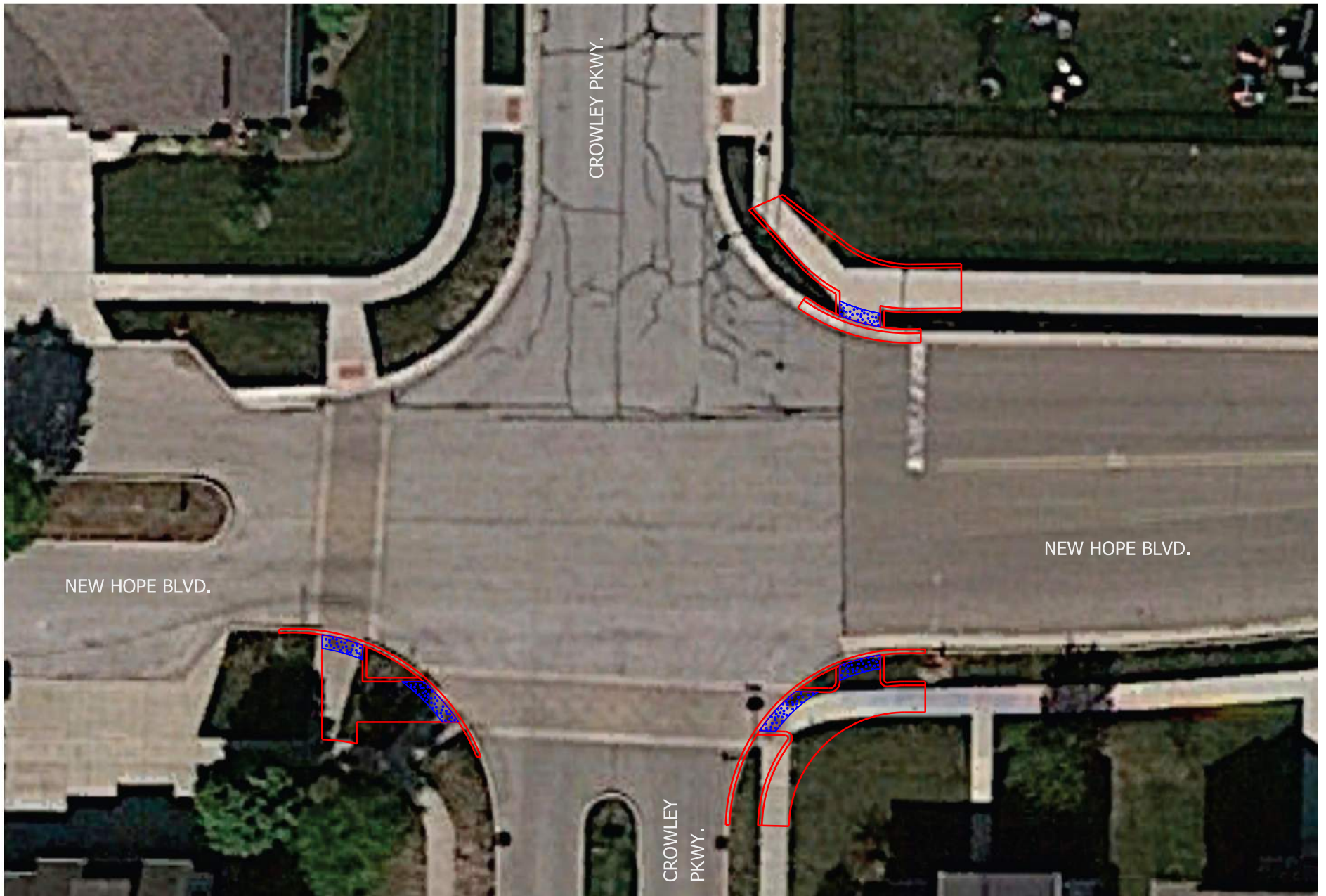
			Engineer's Estimate	Calumet Civil Contractors Inc.	DC Construction Services Inc.			
ADA Curb Ramp Construction Project								
Pay Item Description	Units	Quantity	Unit Price	Extended Price	Bid Unit Price	Extended Price	Bid Unit Price	Extended Price
Construction Engineering	LS	1	\$40,000.00	\$40,000.00	\$4,161.00	\$4,161.00	\$4,000.00	\$4,000.00
Mobilization and Demobilization	LS	1	\$14,276.38	\$14,276.38	\$16,000.00	\$16,000.00	\$6,000.00	\$6,000.00
Curb, Concrete, Remove	LFT	143	\$22.00	\$3,146.00	\$50.00	\$7,150.00	\$7.48	\$1,069.64
Rolled Curb, Concrete, Remove	LFT	860	\$25.00	\$21,500.00	\$50.00	\$43,000.00	\$8.10	\$6,966.00
Sidewalk, Concrete, Remove	SYS	577	\$27.00	\$15,579.00	\$40.00	\$23,080.00	\$37.00	\$21,349.00
Post, Remove (Bollard)	EACH	1	\$500.00	\$500.00	\$1,000.00	\$1,000.00	\$300.00	\$300.00
HMA Patching, Type B	TON	98	\$200.00	\$19,600.00	\$465.00	\$45,570.00	\$200.00	\$19,600.00
Sidewalk, Concrete	SYS	119	\$65.00	\$7,735.00	\$100.00	\$11,900.00	\$90.00	\$10,710.00
Curb Ramp, Concrete	SYS	419	\$190.00	\$79,610.00	\$170.00	\$71,230.00	\$108.00	\$45,252.00
Detectable Warning Surface	SYS	102	\$235.00	\$23,970.00	\$425.00	\$43,350.00	\$135.00	\$13,770.00
Curb, Concrete	LFT	500	\$35.00	\$17,500.00	\$75.00	\$37,500.00	\$25.90	\$12,950.00
Rolled Curb, Concrete	LFT	860	\$40.00	\$34,400.00	\$75.00	\$64,500.00	\$28.44	\$24,458.40
Sodding, Nursery	SYS	175	\$6.50	\$1,137.50	\$55.00	\$9,625.00	\$25.71	\$4,499.25
Casting Adjust to Grade	EACH	10	\$750.00	\$7,500.00	\$800.00	\$8,000.00	\$150.00	\$1,500.00
Maintaining Traffic	LS	1	\$12,000.00	\$12,000.00	\$24,934.00	\$24,934.00	\$2,000.00	\$2,000.00
Sign, Sheet, Assembly, Relocate	EACH	10	\$135.00	\$1,350.00	\$300.00	\$3,000.00	\$200.00	\$2,000.00
Total Project Amount:				\$299,803.88		\$414,000.00		\$176,424.29

**Cells that are highlighted are the corrected amounts as opposed to the 'as read' amounts at the bid opening, and reflect calculation errors that were discovered during the bid review.*

CONTRACTOR CONTACT INFORMATION	Calumet Civil Contractors, Inc.	DC Construction Services, Inc.
	4898 Fieldstone Drive Whitestown, IN 46075 317-769-1900	3497 Conner Street Noblesville, IN 46060 317-577-0276
AFFIDAVIT OF SUBCONTRACTORS EMPLOYED	Yes	Yes
BID FOR PUBLIC WORK - FORM 96	Yes	Yes
BID BOND (5% OF TOTAL BID AMOUNT)	Yes	Yes
FORMS 00770 & 00780	Yes	Yes
EMPLOYEE DRUG TESTING PLAN	Yes	Yes

Certified By: LP Paul Lucks

Date: November 1, 2022



General Note

1. All Proposed lines are an approximate detail of the curb ramp.
Contractor is responsible to build curb ramps per ADA Standards.

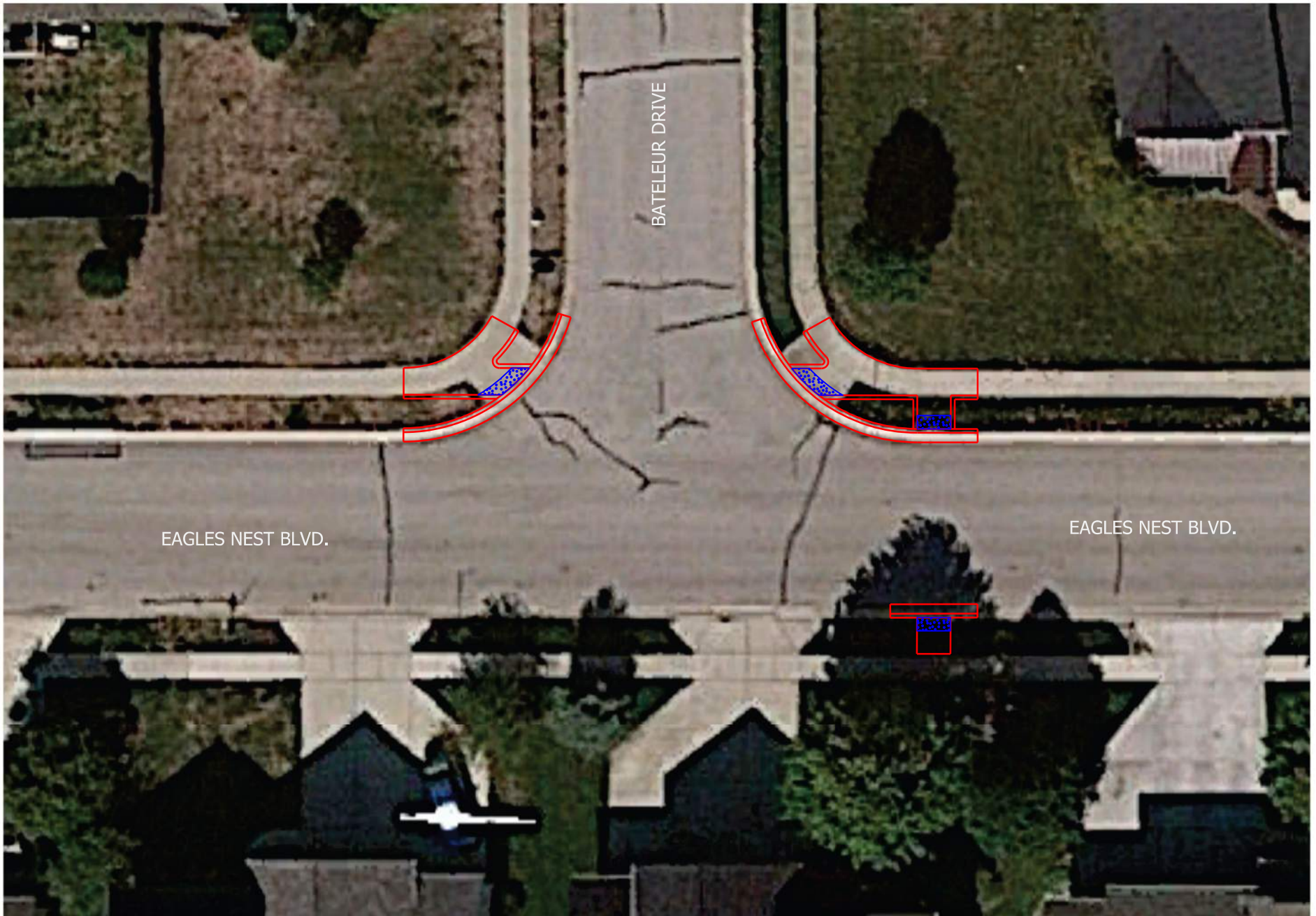


HWC
ENGINEERING

INDIANAPOLIS - TERRE HAUTE
LAFAYETTE - NEW ALBANY - MUNCIE
www.hwcengineering.com



TOWN OF WHITESTOWN
CURB RAMP REPLACEMENT PLANS
8.5" x 11" - SCALE: 1" = 20'



General Note

1. All Proposed lines are an approximate detail of the curb ramp.
Contractor is responsible to build curb ramps per ADA Standards.



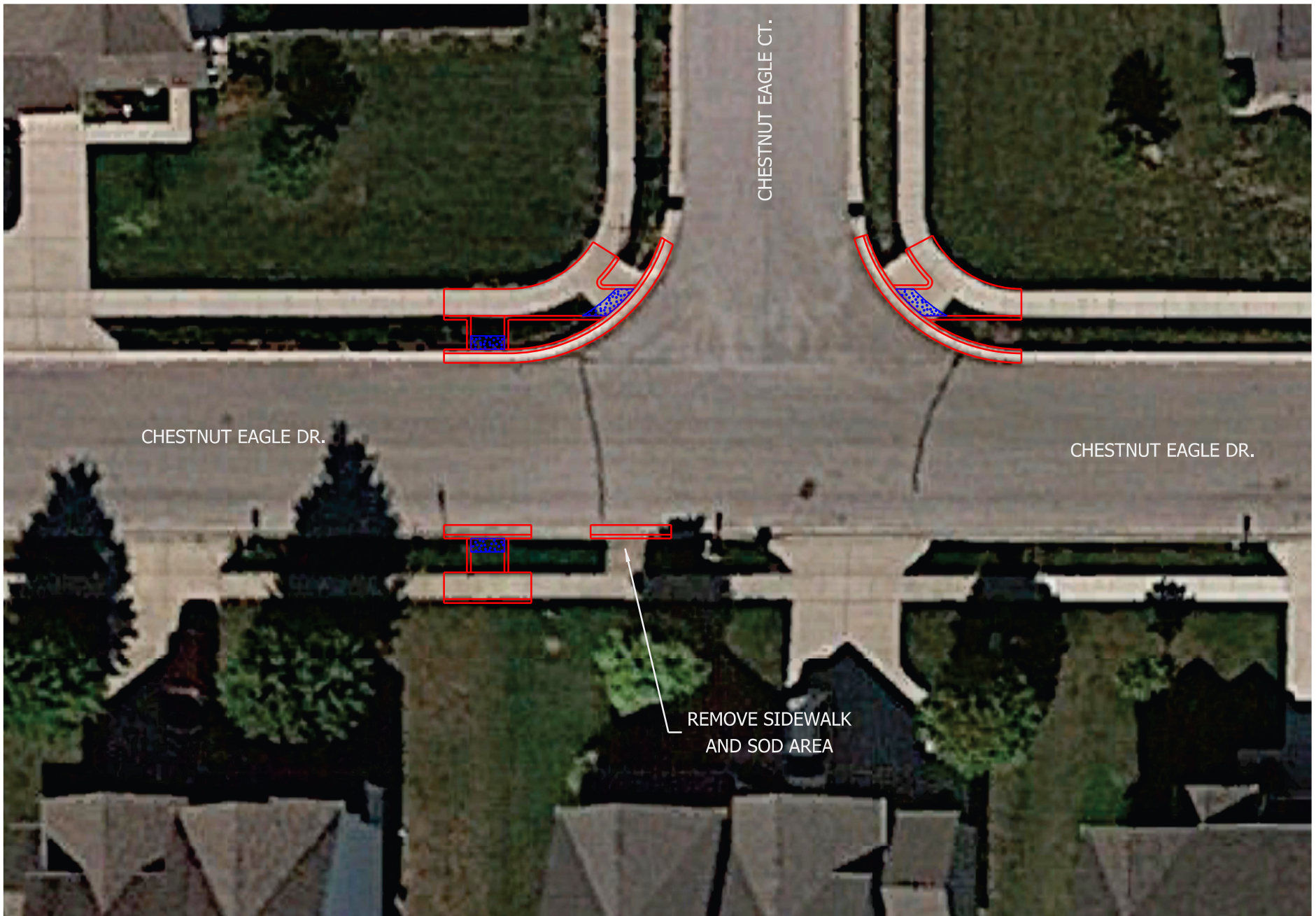
HWC
ENGINEERING

INDIANAPOLIS - TERRE HAUTE
LAFAYETTE - NEW ALBANY - MUNCIE

www.hwcengineering.com

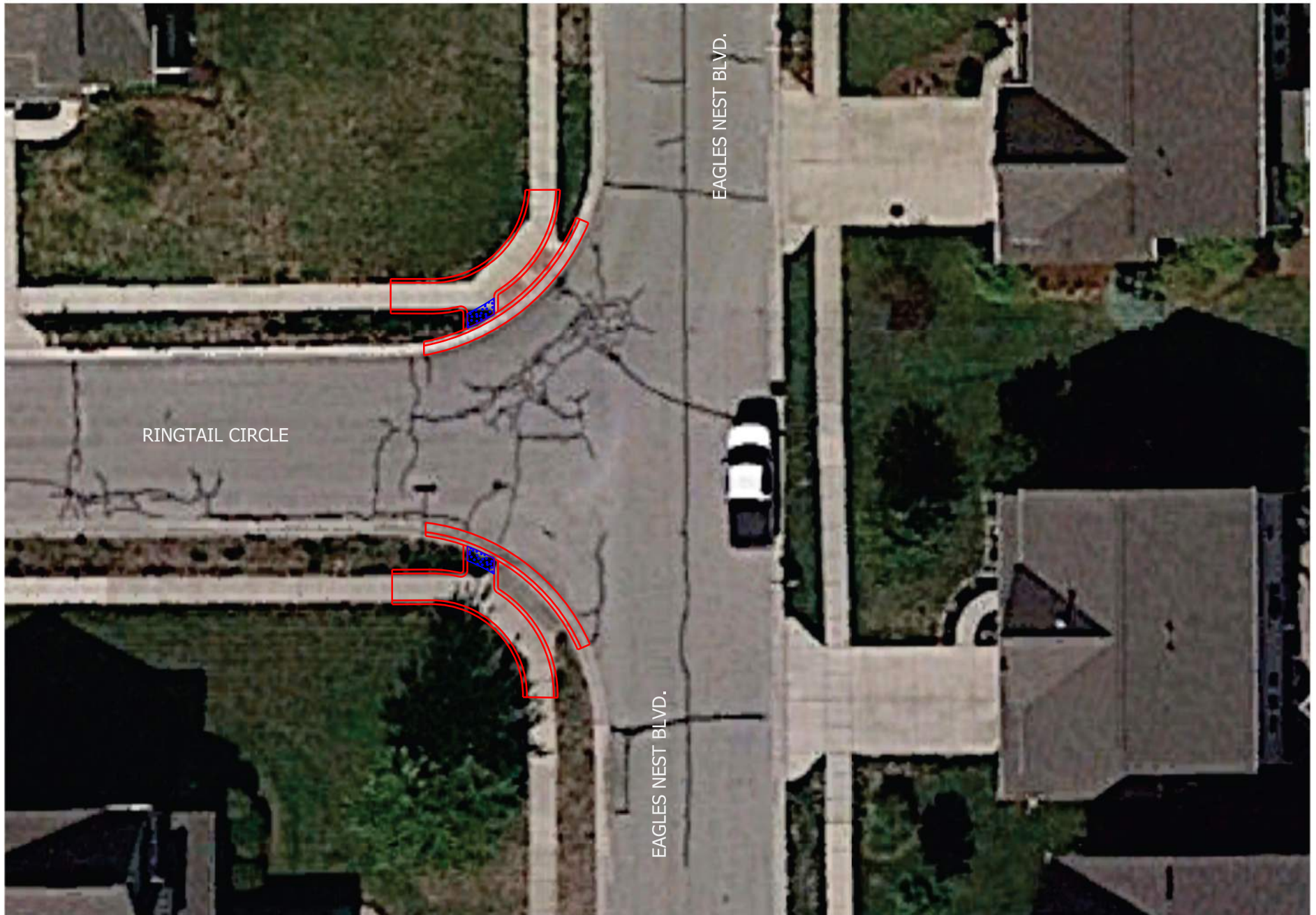


TOWN OF WHITESTOWN
CURB RAMP REPLACEMENT PLANS
8.5" x 11" - SCALE: 1" = 20'



General Note
1. All Proposed lines are an approximate detail of the curb ramp.
Contractor is responsible to build curb ramps per ADA Standards.





General Note

1. All Proposed lines are an approximate detail of the curb ramp.
Contractor is responsible to build curb ramps per ADA Standards.



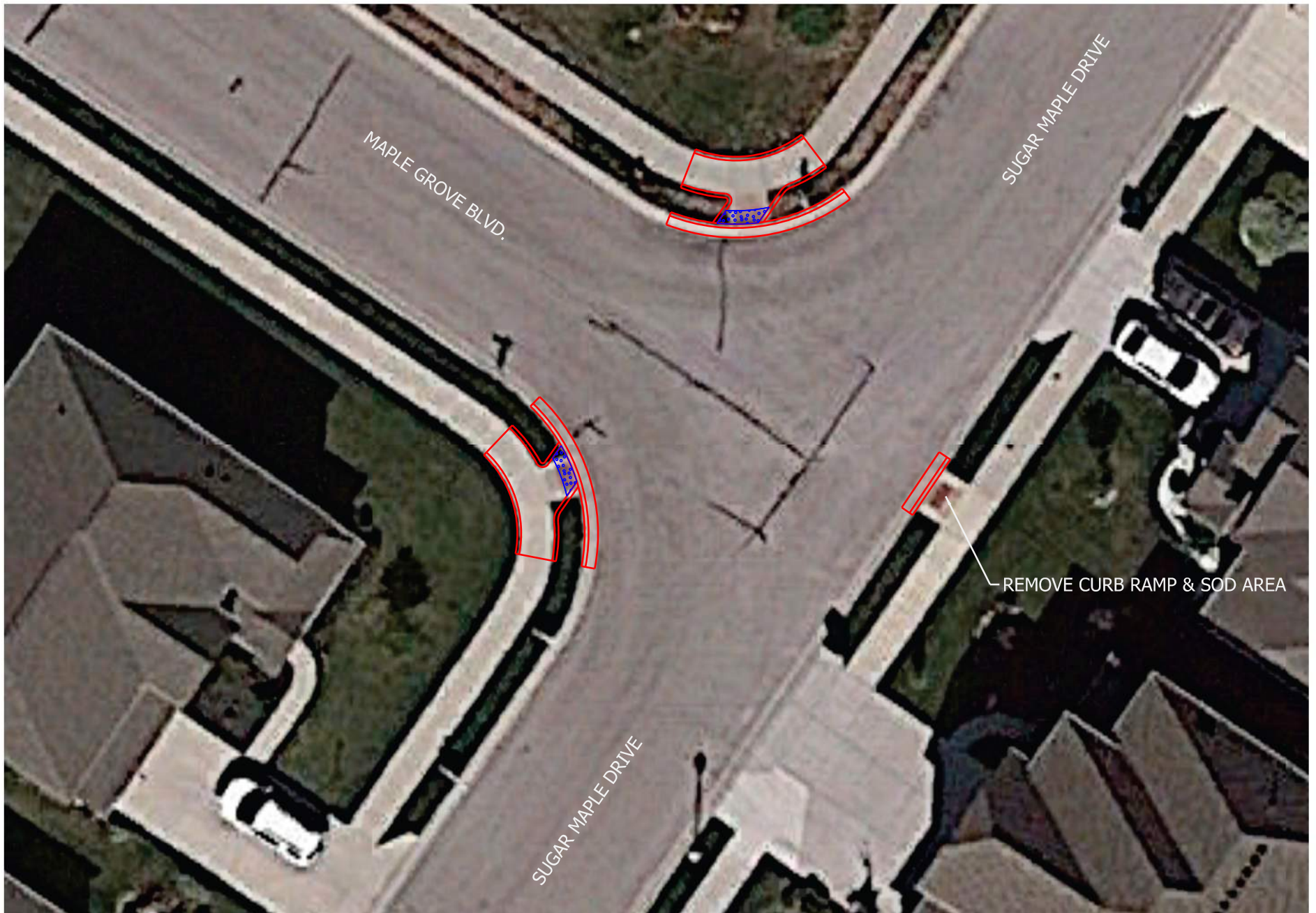
HWC
ENGINEERING

INDIANAPOLIS - TERRE HAUTE
LAFAYETTE - NEW ALBANY - MUNCIE

www.hwcengineering.com



TOWN OF WHITESTOWN
CURB RAMP REPLACEMENT PLANS
8.5" x 11" - SCALE: 1" = 20'



General Note

- 1. All Proposed lines are an approximate detail of the curb ramp.
Contractor is responsible to build curb ramps per ADA Standards.



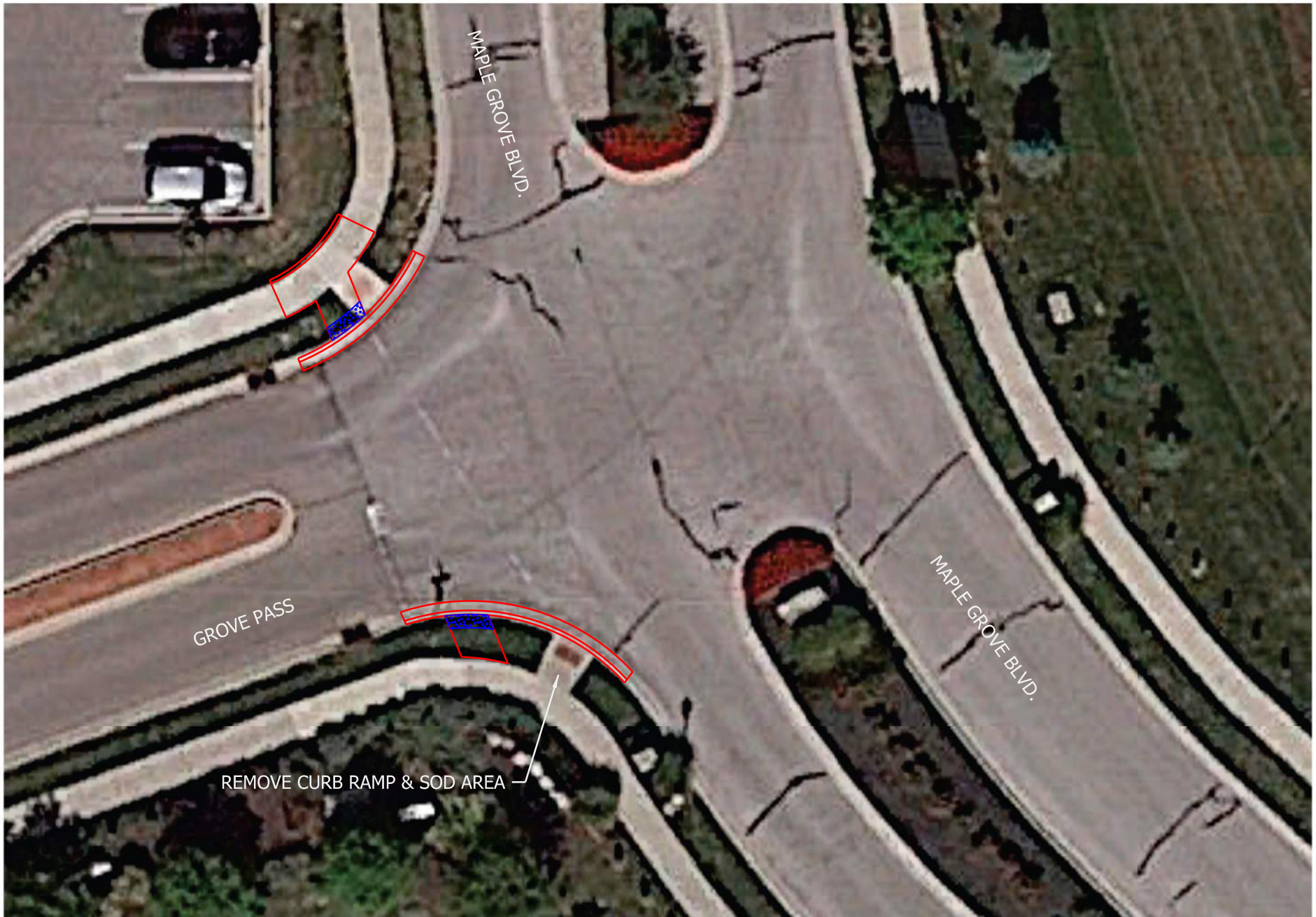
HWC
ENGINEERING

INDIANAPOLIS - TERRE HAUTE
LAFAYETTE - NEW ALBANY - MUNCIE

www.hwcengineering.com



TOWN OF WHITESTOWN
CURB RAMP REPLACEMENT PLANS
8.5" x 11" - SCALE: 1" = 20'



General Note

1. All Proposed lines are an approximate detail of the curb ramp.
Contractor is responsible to build curb ramps per ADA Standards.



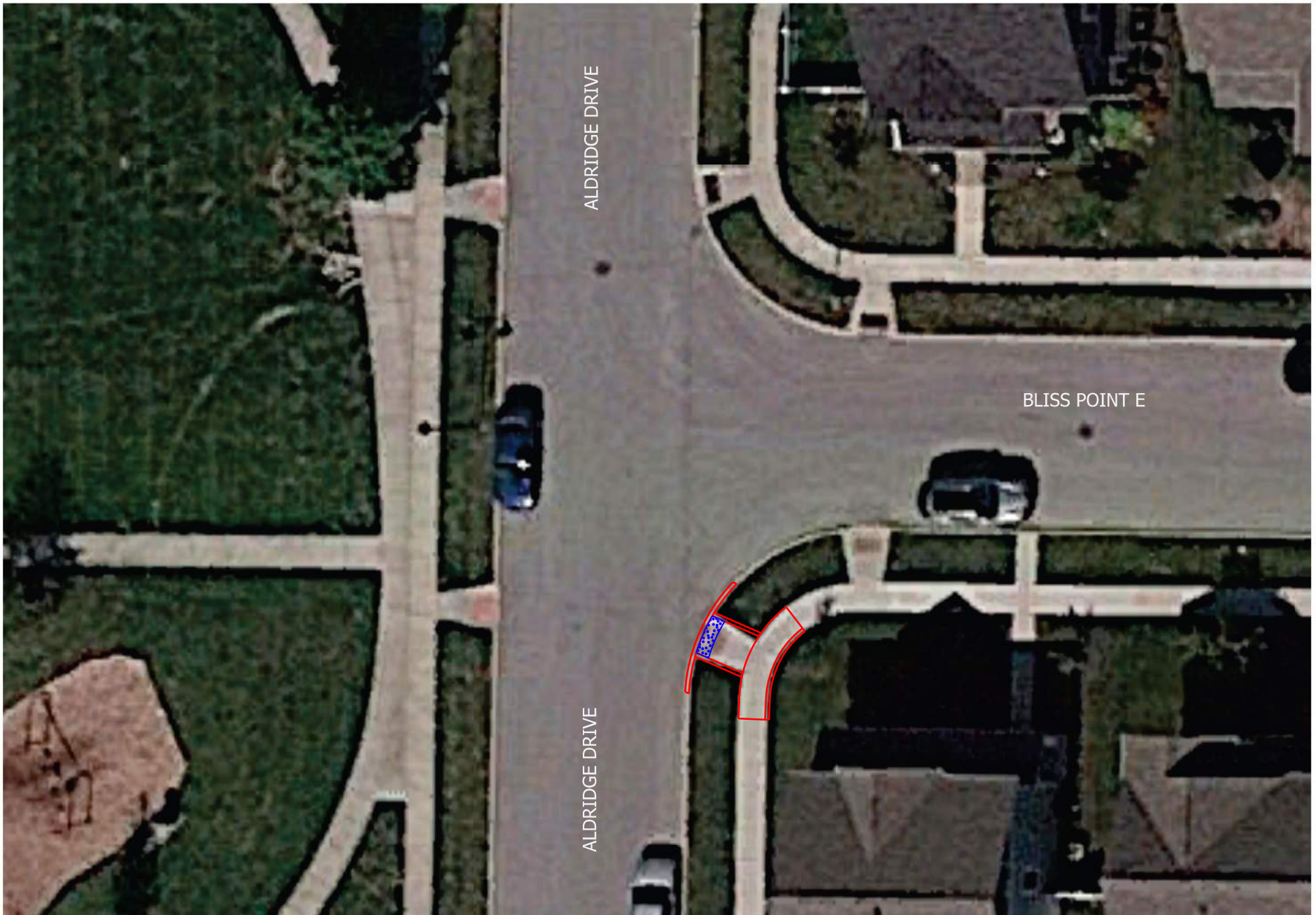
HWC
ENGINEERING

INDIANAPOLIS - TERRE HAUTE
LAFAYETTE - NEW ALBANY - MUNCIE

www.hwcengineering.com



TOWN OF WHITESTOWN
CURB RAMP REPLACEMENT PLANS
8.5" x 11" - SCALE: 1" = 20'



General Note

- 1. All Proposed lines are an approximate detail of the curb ramp.
Contractor is responsible to build curb ramps per ADA Standards.



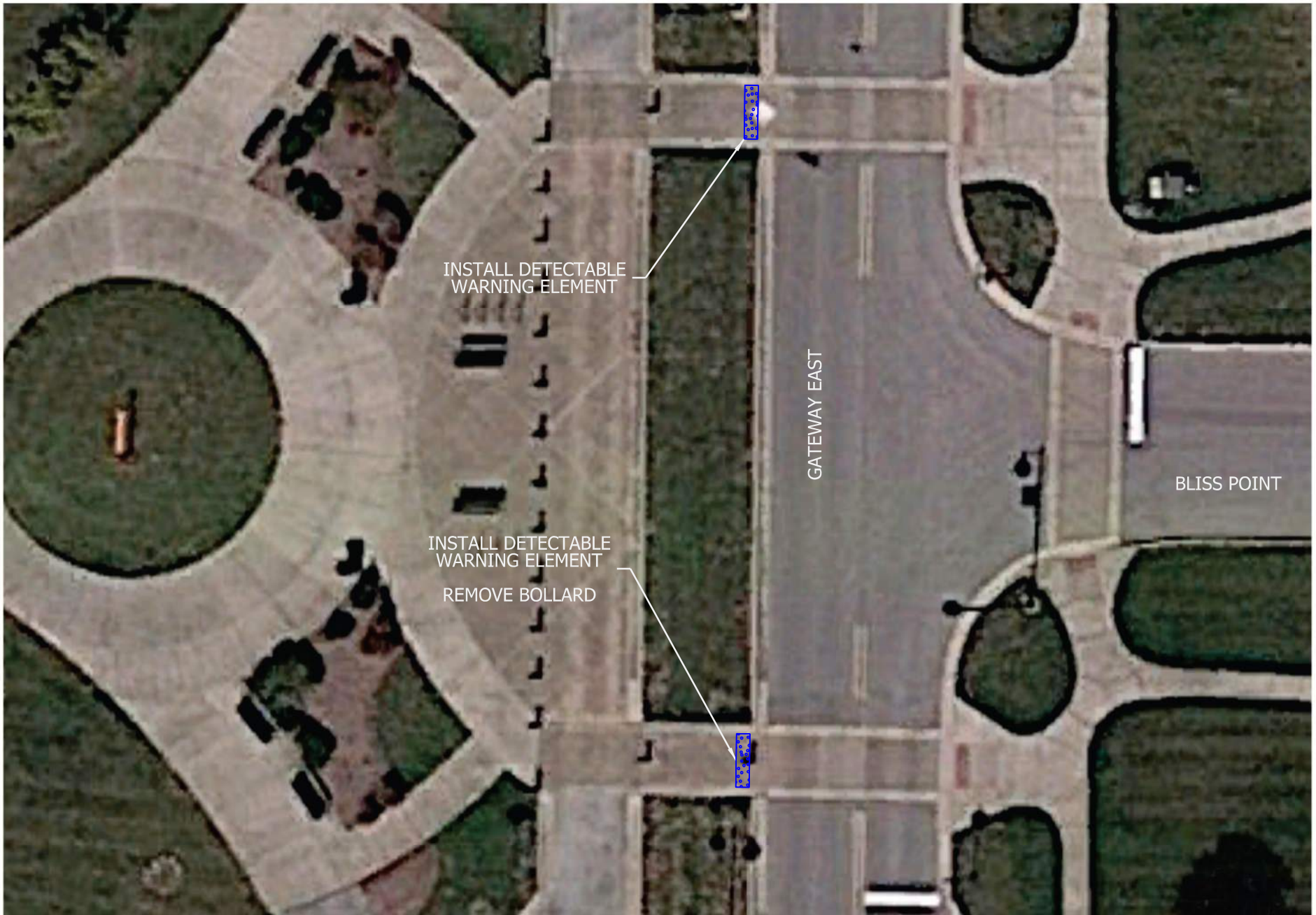
HWC
ENGINEERING

INDIANAPOLIS - TERRE HAUTE
LAFAYETTE - NEW ALBANY - MUNCIE

www.hwcengineering.com



TOWN OF WHITESTOWN
CURB RAMP REPLACEMENT PLANS
8.5" x 11" - SCALE: 1" = 20'



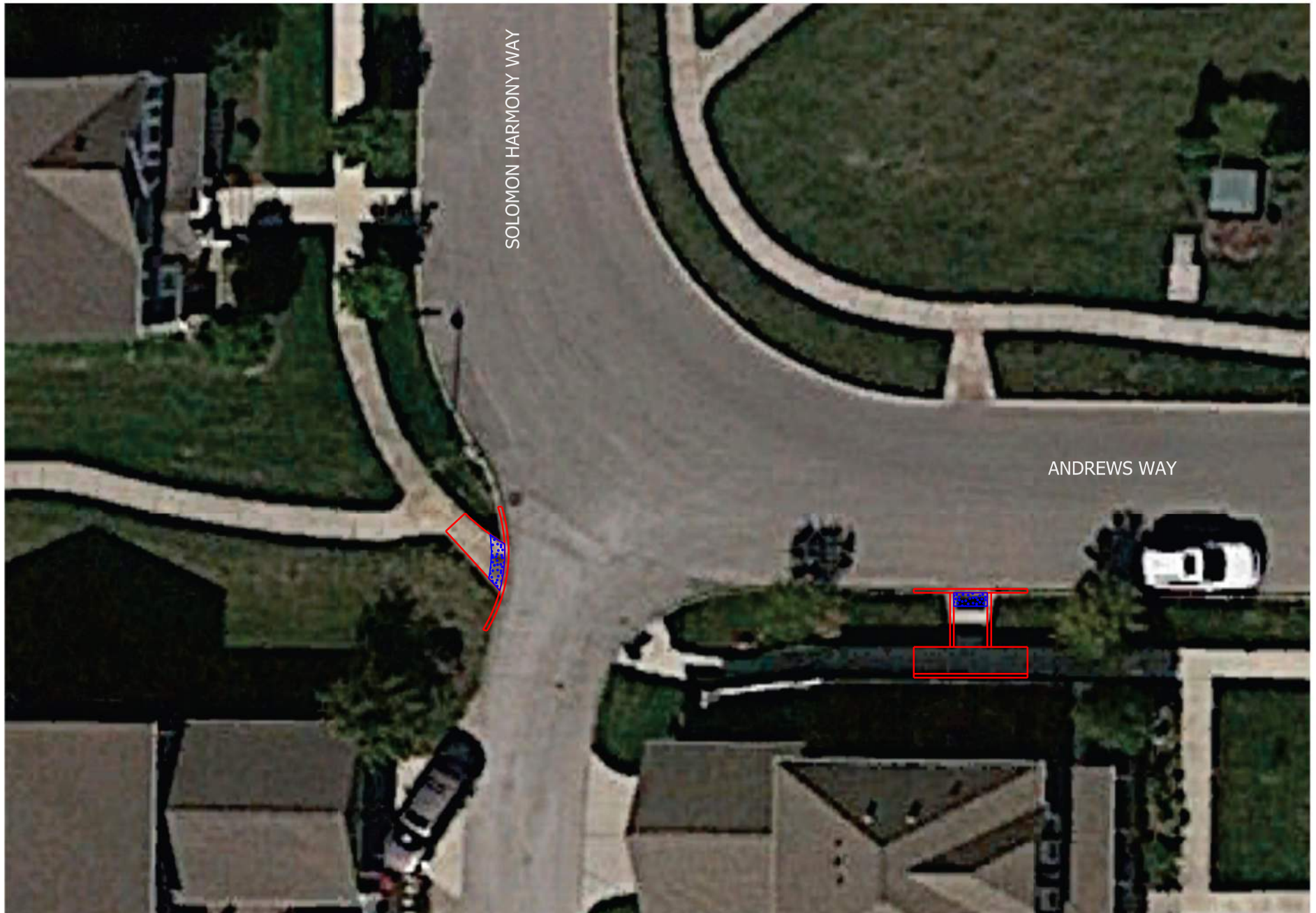
General Note
1. All Proposed lines are an approximate detail of the curb ramp.
Contractor is responsible to build curb ramps per ADA Standards.



INDIANAPOLIS - TERRE HAUTE
LAFAYETTE - NEW ALBANY - MUNCIE
www.hwcengineering.com



TOWN OF WHITESTOWN
CURB RAMP REPLACEMENT PLANS
8.5" x 11" - SCALE: 1" = 20'



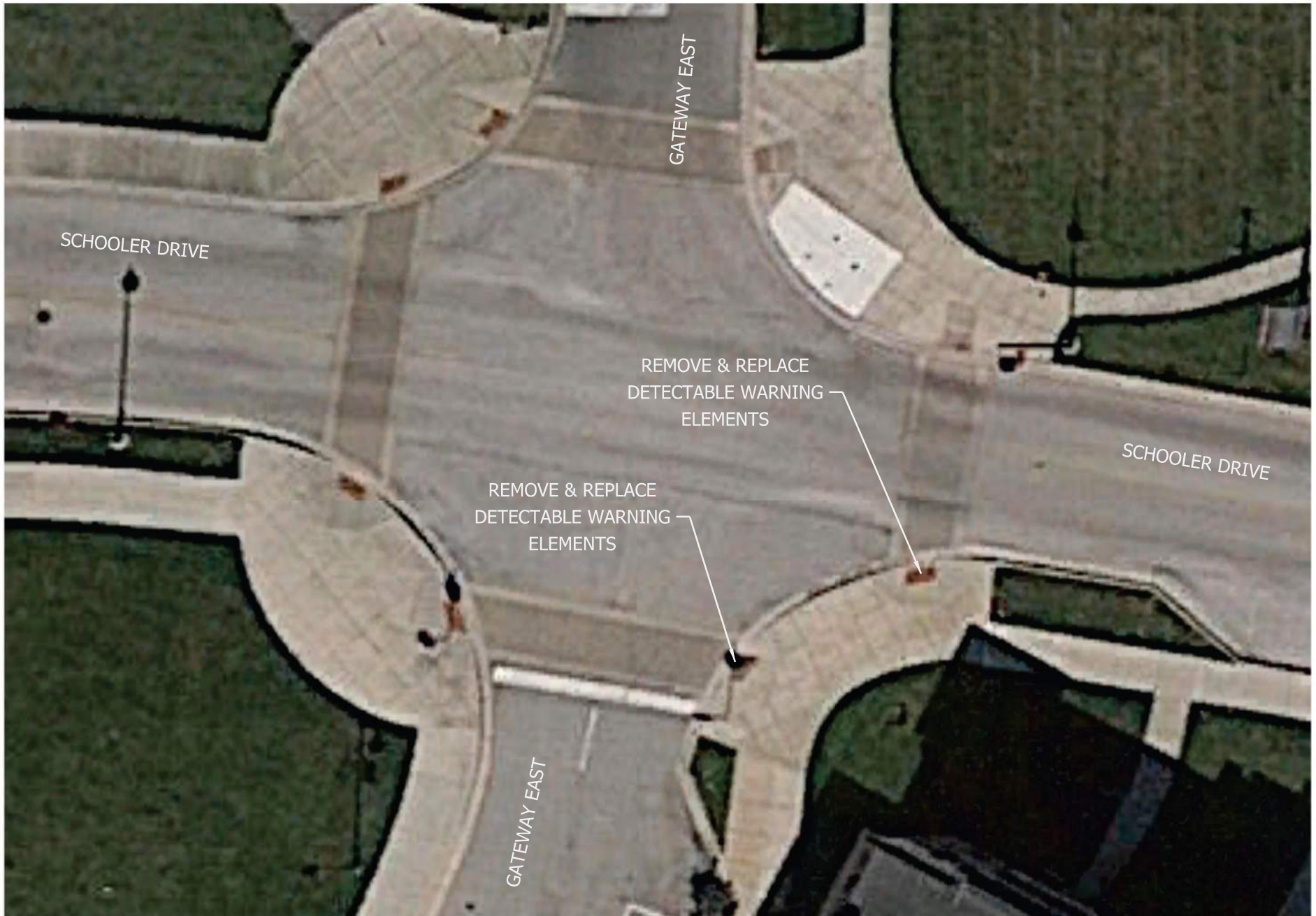
General Note
1. All Proposed lines are an approximate detail of the curb ramp.
Contractor is responsible to build curb ramps per ADA Standards.



INDIANAPOLIS - TERRE HAUTE
LAFAYETTE - NEW ALBANY - MUNCIE
www.hwcengineering.com



TOWN OF WHITESTOWN
CURB RAMP REPLACEMENT PLANS
8.5" x 11" - SCALE: 1" = 20'



General Note

1. All Proposed lines are an approximate detail of the curb ramp.
Contractor is responsible to build curb ramps per ADA Standards.



HWC
ENGINEERING

INDIANAPOLIS - TERRE HAUTE
LAFAYETTE - NEW ALBANY - MUNCIE

www.hwcengineering.com



TOWN OF WHITESTOWN
CURB RAMP REPLACEMENT PLANS
8.5" x 11" - SCALE: 1" = 20'



General Note

- 1. All Proposed lines are an approximate detail of the curb ramp.
Contractor is responsible to build curb ramps per ADA Standards.

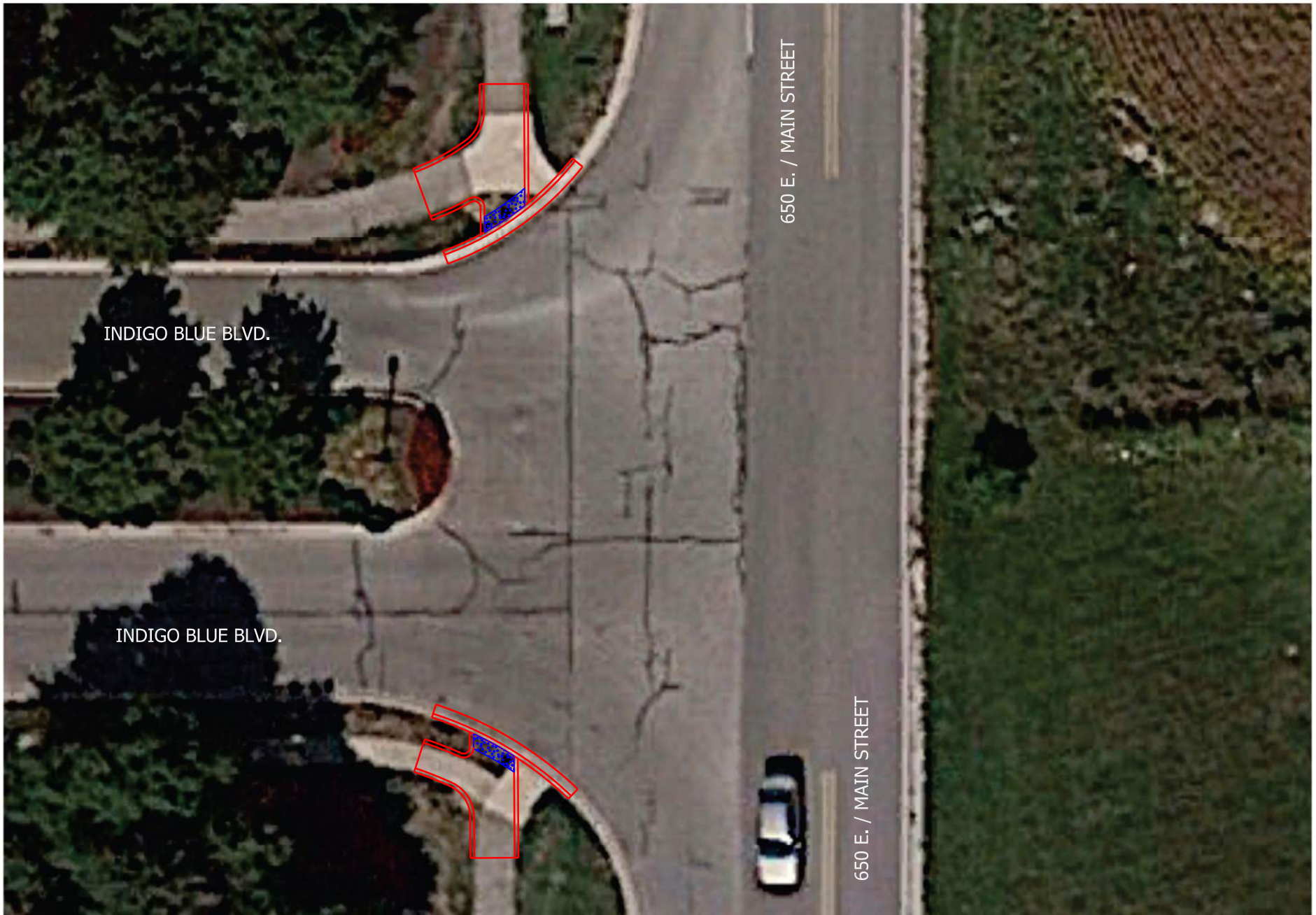


HWC
ENGINEERING

INDIANAPOLIS - TERRE HAUTE
LAFAYETTE - NEW ALBANY - MUNCIE
www.hwcengineering.com



TOWN OF WHITESTOWN
CURB RAMP REPLACEMENT PLANS
8.5" x 11" - SCALE: 1" = 50'



General Note

- 1. All Proposed lines are an approximate detail of the curb ramp.
Contractor is responsible to build curb ramps per ADA Standards.



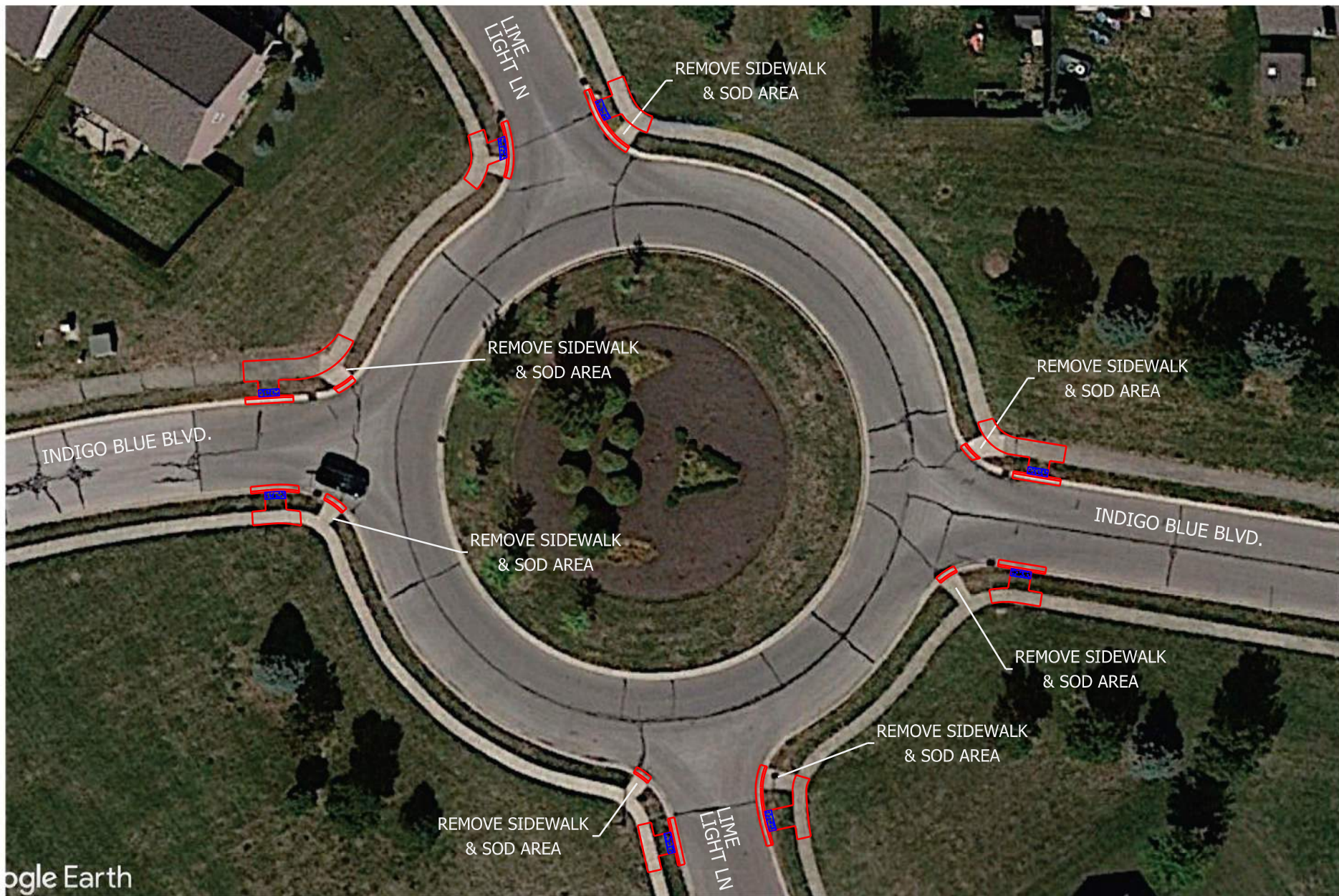
HWC
ENGINEERING

INDIANAPOLIS - TERRE HAUTE
LAFAYETTE - NEW ALBANY - MUNCIE

www.hwcengineering.com



TOWN OF WHITESTOWN
CURB RAMP REPLACEMENT PLANS
8.5" x 11" - SCALE: 1" = 20'



General Note

- 1. All Proposed lines are an approximate detail of the curb ramp. Contractor is responsible to build curb ramps per ADA Standards.



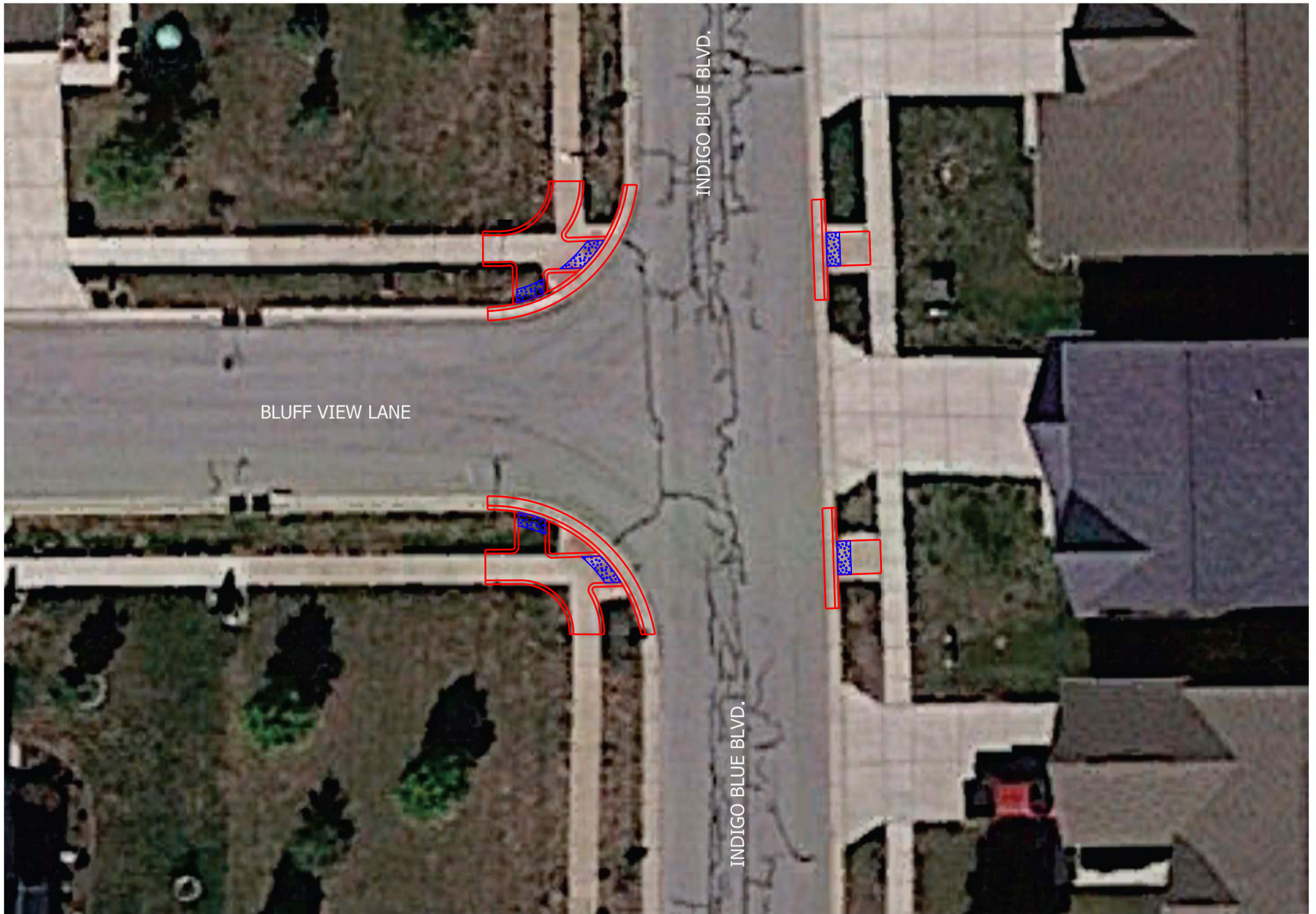
HWC
ENGINEERING

INDIANAPOLIS - TERRE HAUTE
LAFAYETTE - NEW ALBANY - MUNCIE

www.hwcengineering.com



TOWN OF WHITESTOWN
CURB RAMP REPLACEMENT PLANS
8.5" x 11" - SCALE: 1" = 40'



General Note

- 1. All Proposed lines are an approximate detail of the curb ramp. Contractor is responsible to build curb ramps per ADA Standards.



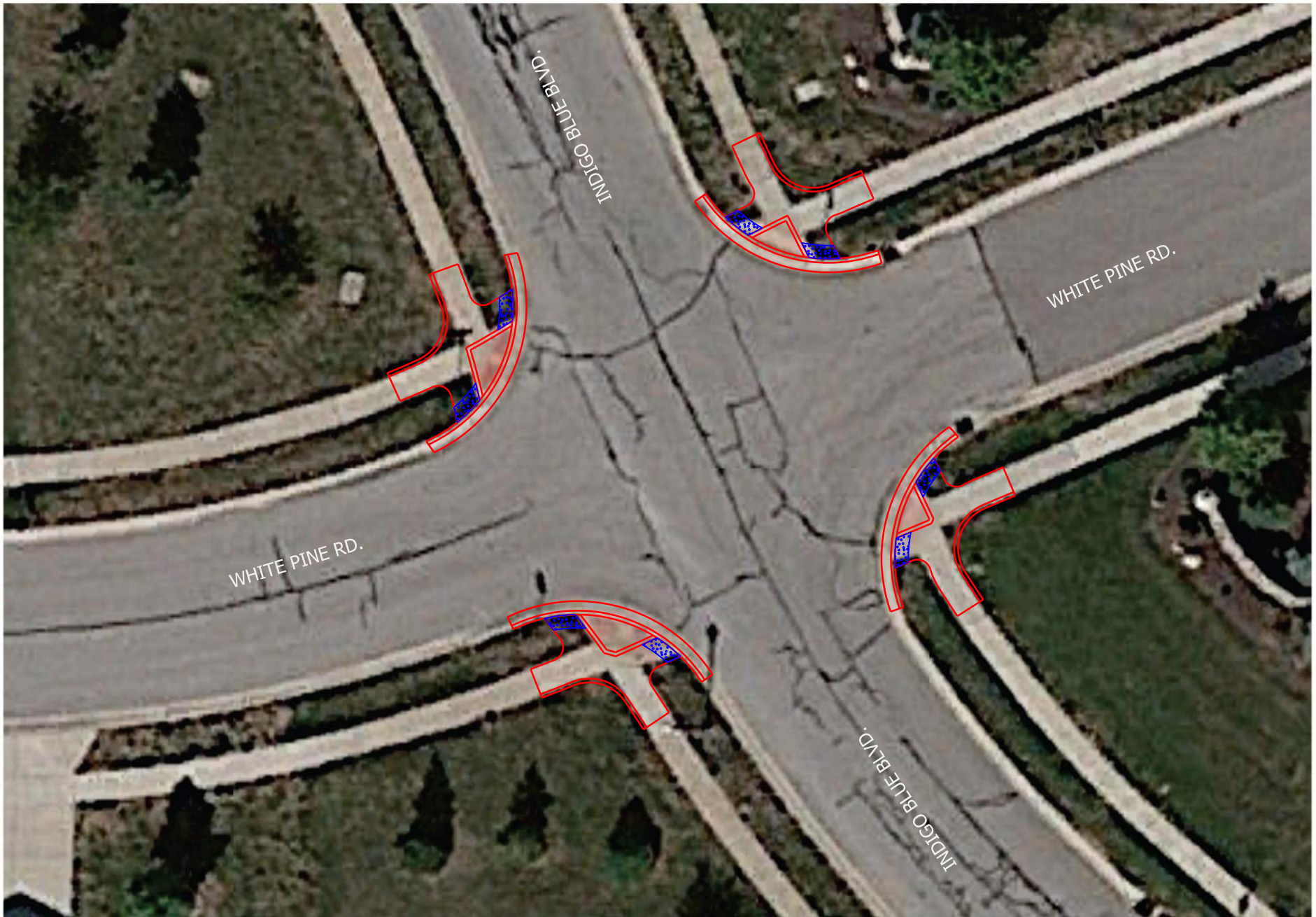
HWC
ENGINEERING

INDIANAPOLIS - TERRE HAUTE
LAFAYETTE - NEW ALBANY - MUNCIE

www.hwcengineering.com



TOWN OF WHITESTOWN
CURB RAMP REPLACEMENT PLANS
8.5" x 11" - SCALE: 1" = 20'



General Note

1. All Proposed lines are an approximate detail of the curb ramp.
Contractor is responsible to build curb ramps per ADA Standards.



HWC
ENGINEERING

INDIANAPOLIS - TERRE HAUTE
LAFAYETTE - NEW ALBANY - MUNCIE

www.hwcengineering.com



TOWN OF WHITESTOWN
CURB RAMP REPLACEMENT PLANS
8.5" x 11" - SCALE: 1" = 20'