

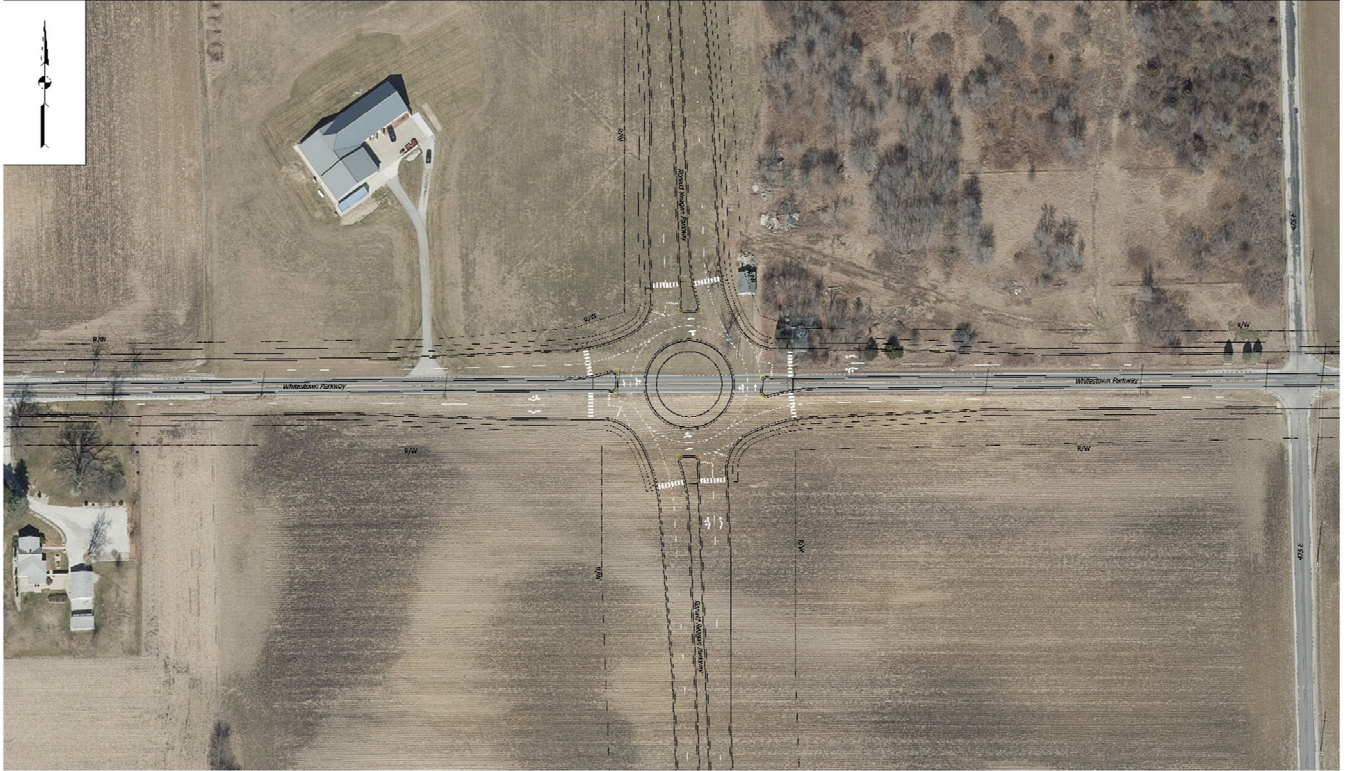
EXHIBIT M1: RONALD REAGAN PARKWAY INTERSECTION TREATMENTS



RONALD REAGAN PARKWAY INTERSECTION TREATMENTS

Exhibit M1 is intended to show town priorities for the Ronald Reagan Parkway intersections with Whitestown Parkway and County Road 750 South. The following Exhibits M2, M3, and M4 show greater detail of the anticipated intersection needs. These exhibits are not intended to represent finalized plans, but a representation of the right-of-way needs and shifts in alignments to accommodate existing community amenities like the Howard School along County Road 750 South.

EXHIBIT M2: RONALD REAGAN PARKWAY & WHITESTOWN PARKWAY INTERSECTION TREATMENT – SHORT TERM



RONALD REAGAN PARKWAY & WHITESTOWN PARKWAY INTERSECTION TREATMENTS – SHORT TERM

Exhibit M2 is intended to show town priorities for the Ronald Reagan Parkway and Whitestown Parkway initial intersection improvement. It is anticipated that this intersection will see significant traffic with the connect just over a mile to the east to Interstate 65 and connection to the south into Hendricks County where Ronald Reagan Parkway connects to Interstate 74. A dual lane roundabout is projected to accommodate short term and midterm traffic volumes. As both roadways reach their anticipated four lane buildouts additional intersection treatments may be needed. Therefore, understanding development impacts adjacent to this intersection is critical. The following Exhibit M3 identifies the potential needs for a separated crossing of Ronald Reagan Parkway and Whitestown Parkway.

EXHIBIT M3: RONALD REAGAN PARKWAY & WHITESTOWN PARKWAY INTERSECTION TREATMENT – LONG TERM



RONALD REAGAN PARKWAY & WHITESTOWN PARKWAY INTERSECTION TREATMENTS – LONG TERM

Exhibit M3 is intended to show town priorities for the intersection needs as traffic on both Ronald Reagan Parkway and Whitestown Parkway increases to accommodate the traffic volume growth anticipated. The proposed separated crossing is intended to maintain traffic flow on both roadways and help to sustain pedestrian and bicycle movements through the intersection.

EXHIBIT M4: RONALD REAGAN PARKWAY & COUNTY ROAD 750 SOUTH INTERSECTION TREATMENT AND SHIFT IN ALIGNMENT



RONALD REAGAN PARKWAY & COUNTY ROAD 750 SOUTH INTERSECTION TREATMENTS AND SHIFT IN ALIGNMENT

Exhibit M4 is intended to show town priorities for County Road 750 South between County Road 450 East and Ronald Reagan Parkway. The Town recognizes the Howard School and cemetery as community assets and desires to ensure infrastructure improvements consider their importance.