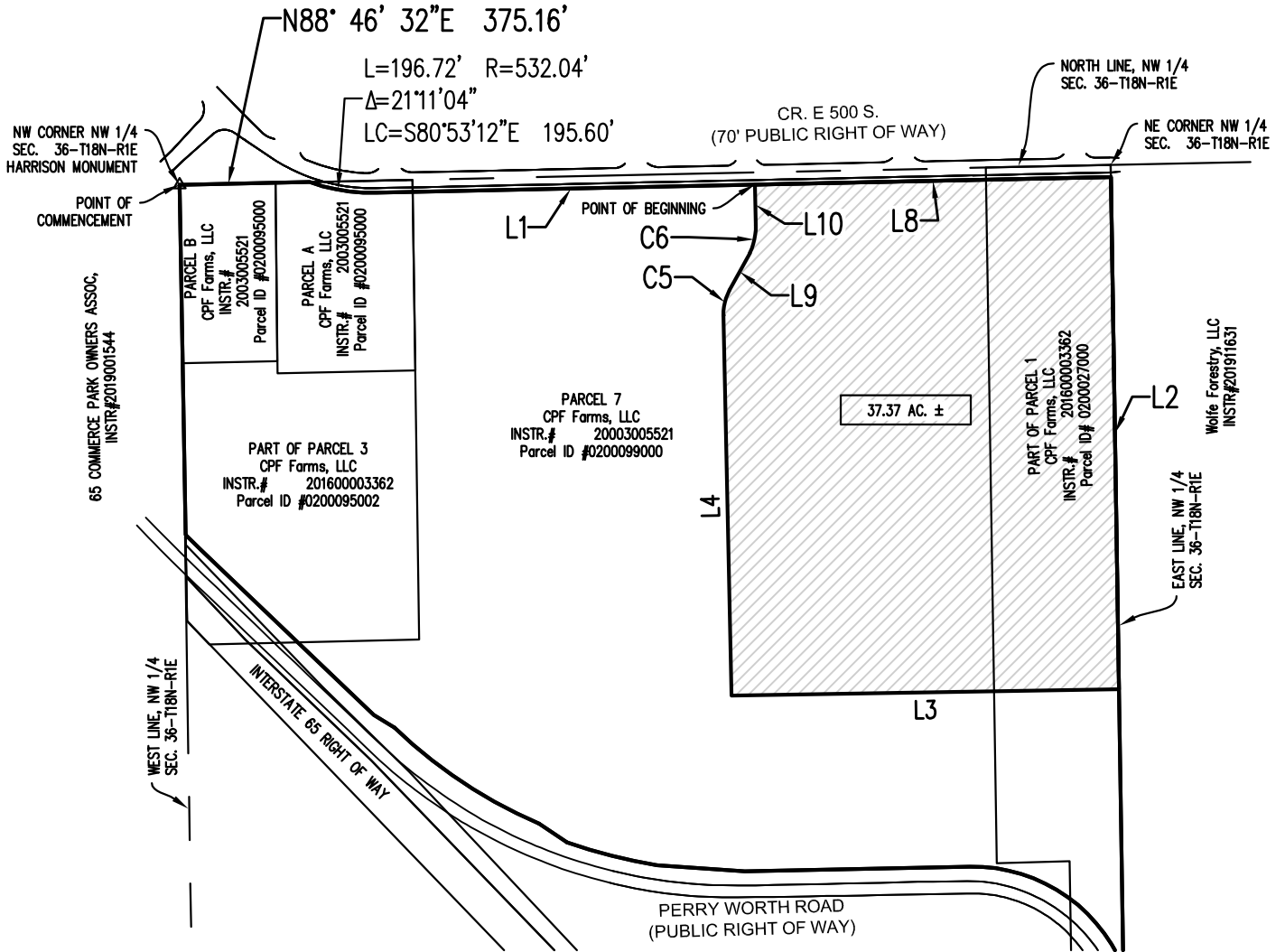


# EXHIBIT "A"



SCALE: 1"=500'

Indiana State Plane Coordinate System  
West Zone



This drawing is not intended to be represented as a retracement or original boundary survey, a route survey, or a Surveyor Location Report

Curve #	Length	Radius	Delta	Chord Direction	Chord Length
C5	76.18	145.50	30.00	N13° 46' 22"E	75.32
C6	82.97	179.41	26.50	N12° 00' 54"E	82.24

Line #	Direction	Distance
L3	S89° 02' 33"W	1117.33'
L4	N01° 13' 38"W	1096.20'
L10	N01° 13' 28"W	116.68'
L2	S00° 54' 24"E	1476.07'
L8	N88° 46' 22"E	1026.56'
L9	N28° 46' 22"E	121.37'
L1	N88° 46' 22"E	1090.74'

2012, THE SCHNEIDER CORPORATION



**THE SCHNEIDER GEOMATICS**  
Historic Fort Harrison  
8901 Otis Avenue  
Indianapolis, IN 46216-1037  
Telephone: 317.826.7100  
Fax: 317.826.7200  
www.schneidercorp.com

**CLARK INDUSTRIAL**

DATE: <b>10/31/2023</b>	PROJECT NO.: <b>13743</b>
DRAWN BY: <b>ARW</b>	CHECKED BY: <b>WRB</b>

DRAWING FILES:  
T:\13K\13743\CAD\13743\_E 10-27-2023

# EXHIBIT "A"

Legal Description


Grantors: CPF Farms, LLC.  
Part of Quitclaim Deed  
Instrument No. 2003005521, 201600003362

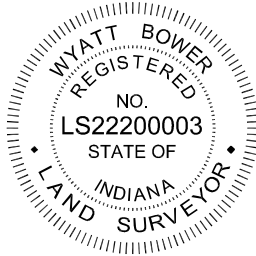
A part of the northwest quarter of Section 36, Township 18 North, Range 1 East, situated in Perry Township, Boone County, Indiana; and being more particularly described, as follows:

Commencing at the Northwest corner of said Northwest Quarter, being a Harrison Monument; thence North 88 degrees 46 minutes 32 seconds East (basis of bearing = Indiana State Plane Coordinate System – West Zone), along the North line of said quarter, 375.16 feet to a point on the south right of way line of County Road E. 500 S., said point also a point on a non-tangent curve to the left having a radius of 532.04 feet, the chord of which bears South 80 degrees 53 minutes 12 seconds East for a distance of 195.60 feet; thence along the arc of said curve for a distance of 196.72 feet to a point on the south right of way of County Road E. 500 S.; thence North 88 degrees 46 minutes 22 seconds East a distance of 1090.74 feet to the East line of the northwest quarter to the Point of Beginning; thence North 88 degrees 46 minutes 22 seconds East a distance of 1026.56 feet; thence South 00 degrees 54 minutes 24 seconds East a distance of 1476.07 feet along said east line; thence South 89 degrees 02 minutes 33 seconds West a distance of 1117.33 feet; thence North 01 degrees 13 minutes 38 seconds West a distance of 1096.20 feet; thence, along a curve to the right with a radius of 145.50 feet, the chord of which bears North 13 degrees 46 minutes 22 seconds East for a distance of 75.32 feet; thence along the arc of said curve for a distance of 76.18 feet to a point; thence North 28 degrees 46 minutes 22 seconds East a distance of 121.37 feet; thence, along a non-tangent curve to the left having a radius of 179.41 feet, the long chord of which bears North 12 degrees 00 minutes 54 seconds East for a distance of 82.24 feet and arc length of 82.97 feet to a point; thence North 01 degrees 13 minutes 28 seconds West a distance of 116.68 feet to the Point of Beginning.

Containing 37.37 acres, more or less.

Prepared by:

  
Wyatt Bower  
Registered Land Surveyor #LS22200003  
wbower@schneidergeomatics.com  
October 31, 2023



2012, THE SCHNEIDER CORPORATION



**THE SCHNEIDER GEOMATICS**  
Historic Fort Harrison  
8901 Otis Avenue  
Indianapolis, IN 46216-1037  
Telephone: 317.826.7100  
Fax: 317.826.7200  
www.schneidercorp.com

**CLARK INDUSTRIAL**

DATE: <b>10/31/2023</b>	PROJECT NO.: <b>13743</b>
DRAWN BY: <b>ARW</b>	CHECKED BY: <b>WRB</b>
DRAWING FILES: T:\13K\13743\CAD\13743_E 10-27-2023	